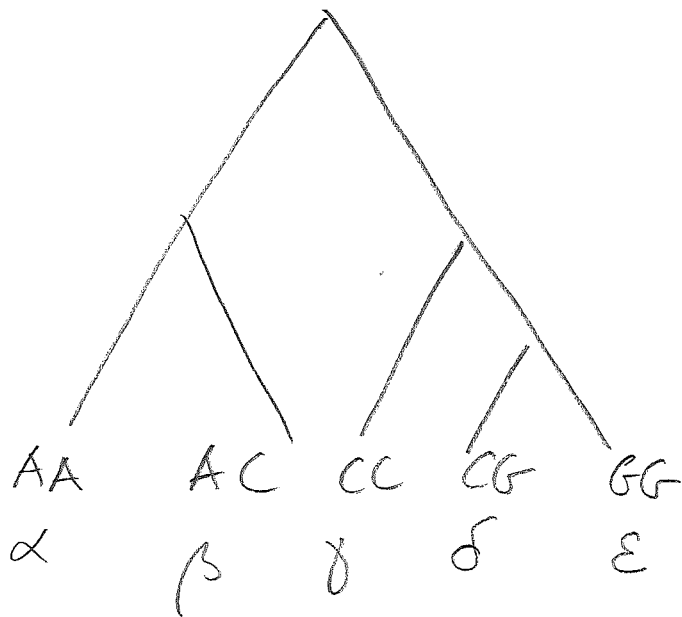


Exercise :

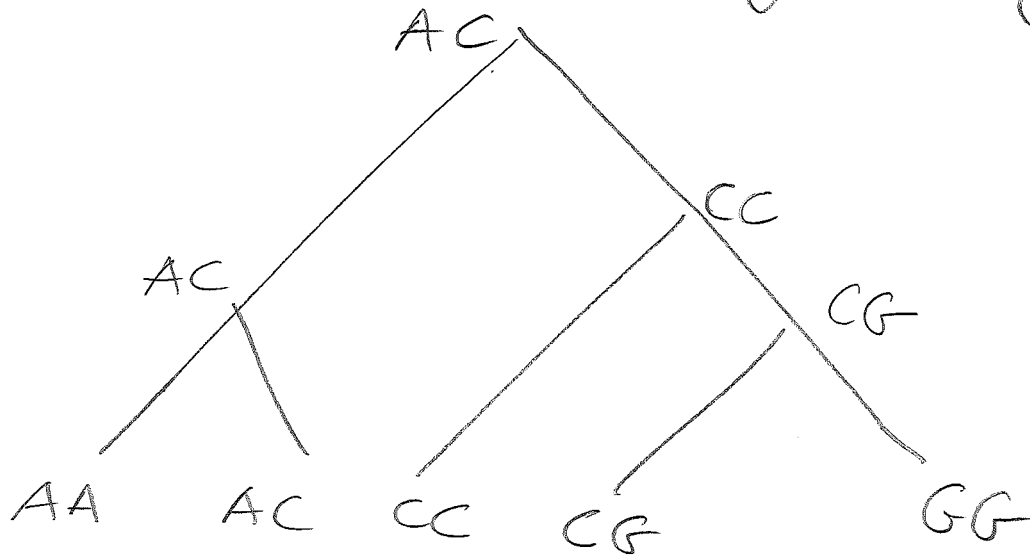
input :

α (AA)
 β (AC)
 γ (CC)
 δ (CG)
 ϵ (GG)

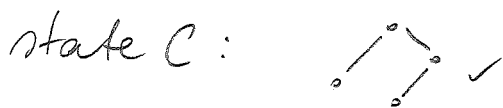
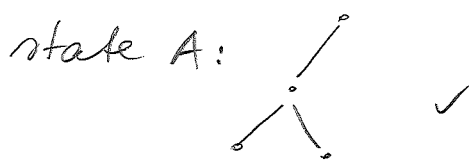


Question : Is this tree a PP for the input ?

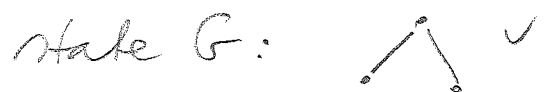
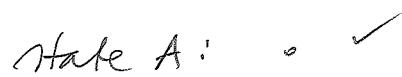
Answer: YES. To show this, we need to give a labelling of the inner nodes s.t. for each character, every state induces a subtree. Consider the following labelling:



Char 1:



char 2:



Therefore, the tree is compatible with both characters.